



**OFFI  
CINE**  
TAMBORRINO

**DISCO**

# DISCO

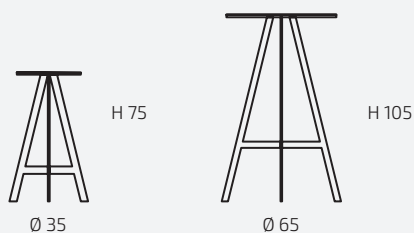
designer Marco Capeto



Una re-interpretazione in chiave contemporanea dello sgabello da bancone con colori vivaci e di tendenza. Struttura piena in tubolare rettangolare su cui poggia la seduta circolare formata da serie di dischi metallici. Il disco superiore è applicato a incastro, pertanto può essere fornito con colorazione differente dalla struttura creando un interessante contrasto cromatico.

Disponibile anche nella versione tavolo.

*It is a contemporary reinterpretation of the classical bar stool by using lively and trendy colours. Composed of a stool frame with rectangular steel profiles and a seat made by overlaying several steel discs on top of each other. The metal disc on top can be provided in various colours to create inspiring chromatic connections with the stool frame.*

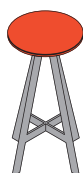
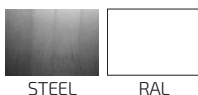


**DIMENSIONI/SIZE\_** Ø 35 X H75 cm / Ø 65 X H105 cm

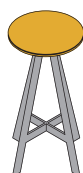
**MATERIALI/ MATERIALS**

tubolare e lamiera in acciaio  
*tubular profile and steel plate*

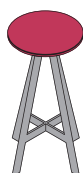
**FINITURE  
FINISHES**



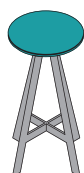
RAL 2004



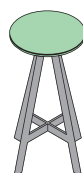
RAL 1007



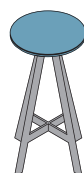
RAL 3027



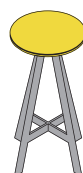
RAL 5018



RAL 6019



RAL 5024



RAL 1018